



Dear Patron

To make this booklet user friendly, we have incorporated a referential cross index which is tabulated in 2 ways –

1. By Ailment (Disease)
2. By Specialty Product Name

Also to take care of **Acute Ailments**, a draft index is tabulated in cross reference format

1. By Ailment (Disease)
2. By Speciality Product Name

As discerning users of homoeopathic medicines, we urge you to ensure that the products you use are manufactured by companies who are reputed never to compromise on quality.

SBL – The natural way to a healthy healing...



Index by Disease (Alphabetical Order)

S.NO.	AILMENT	REMEDY	PAGE NO.
1	Acidity / Heartburn	Nixocid Tablets / Syrup	1
2	Anaemia	Fe-min Tablets	2
		Ferrumsip Syrup	3
3	Anxiety & Stress	Tranquil Tablets	4
4	Blurred vision & Conjunctivitis	Cineraria Maritima Euphrasia Eye drops	5
5	Blurred vision	Cineraria Maritima 10% Eye Drops	6
		Cineraria Maritima (Alcohol Free) Eye Drops	
6	Cold & Flu	AF-Tabs	7
7	Conjunctivitis & Eye Strain	Euphrasia 10 % Eye Drops	8
8	Controlling Blood Sugar	Diaboherb (Oral Liquid)	9
		Dibonil Tablets / Drops	10
9	Cough	Stodal + Cough Syrup	11
10	Cervical Pain	SBL Drops No. 5	12
11	Delayed & Difficult Dentition	Denton Tablets	13
12	Deworming	Wormorid Drops	14
13	Earache	Mullein Ear Drops	15
14	Energy Stimulant	Alfalfa Malt	16
15	Engorged Rectal Veins & Fissures	FP-Tabs & Ointment	17
16	First Aid for wounds	Woundwell Calendula Spray	18
17	Gas & colic in children	Zerogrype Drops	19
18	General Tonic	Alfalfa Tonic	20
19	Growth Promoter	Rite- Hite Tablets	21
20	Hair Problems	SBL Drops No. 1	22
		Scalptone Tablets	23
21	Headache	Relaxhed Drops / Tablets	24
22	Heart Complaints	Tonicard Gold Drops	25
23	Indigestion & Flatulence	SBL's Kalmegh Syrup & Paediatric Drops	26
24	Joint Pain	SBL Drops No. 6	27
25	Leucorrhoea	Pelvorin Tablets	28
26	Liver Tonic	LIV T	29
27	Lumbago (Backache)	Vertefine Drops	30
28	Management of BP	SBL Drops No. 4	31
29	Management of ED	Damiagra Drops	32
30	Management of Weight	B-Trim Drops	33
		Phytolacca Berry Tablets	34
31	Monthly abdominal pain	SBL Drops No. 2	35

S.NO.	AILMENT	REMEDY	PAGE NO.
		Dysmin Tablets	36
32	Mouth Ulcers	Rinsout Drops	37
33	Muscles & Joint Pain	Orthomuv Syrup	38
		Orthomuv Massage Oil, Spray & Roll-On	
34	Nerve Tonic	Sativol	39
35	Osteoporosis	Homeocal Tablets	40
36	Pain Reliever	Arnica Act Spray	41
37	Renal colic	Clearstone Drops	42
38	Sinusitis	SBL Drops No .7	43
39	Sleeplessness	Sleeptite Tablets	44
40	Tonsillitis	Tonsilat Tablets	45
41	Trauma & Accidents	AT-Tabs	46
42	Urinary complaints of Old men	Prostonum Drops	47
43	Urinary Tract Infection	SBL Drops No. 3	48
44	Uterine Tonic	Utrofyne Syrup	49
45	Warts	Thuja Roll-On	50

Index by Specialty Product (Alphabetical Order)

S.NO.	AILMENT	REMEDY	PAGE NO.
1	AF-Tabs	Cold & Flu	7
2	Alfalfa Malt	Energy Stimulant	16
3	Alfalfa Tonic	General Tonic	20
4	Arnica Act Spray	Pain Reliever	41
5	AT-Tabs	Trauma & Accidents	46
6	B-Trim Drops	Management of weight	33
	Phytolacca Berry Tablets		34
7	Cineraria Maritima 10 % Eye Drops	Blurred vision	6
	Cineraria Maritima (Alcohol Free) Eye Drops		
8	Cineraria Maritima Euphrasia Eye Drops	Blurred vision & Conjunctivitis	5
9	Clearstone Drops	Renal Colic	42
10	Damiagra Drops	Management of ED	32
11	Denton Tablets	Delayed & Difficult Dentition	13

S.NO.	AILMENT	REMEDY	PAGE NO.
12	Diaboherb (Oral Liquid)	Controlling Blood Sugar	9
	Dibonil Tablets / Drops		10
13	Euphrasia 10 % Eye Drops	Conjunctivitis & Eye Strain	8
14	Fe-min Tablets	Anaemia	2
	Ferrumsip Syrup		3
15	FP -Tabs & Ointment	Engorged Rectal Veins & Fissures	17
16	Homeocal Tablets	Osteoporosis	40
17	SBL's Kalmegh Syrup & Paediatric Drops	Indigestion & Flatulence	26
18	LIV T	Liver Tonic	29
19	Mullein Ear Drops	Earache	15
20	Nixocid Tablets / Syrup	Acidity / Heartburn	1
21	Orthomuv Syrup	Muscles & Joint Pain	38
	Orthomuv Massage Oil, Spray & Roll On		
22	Pelvorin Tablets	Leucorrhoea	28
23	Prostonum Drops	Urinary complaints of Old men	47
24	Relaxhed Drops / Tablets	Headache	24
25	Rinsout Drops	Mouth Ulcers	37
26	Rite- Hite Tablets	Growth Promoter	21
27	Sativol	Nerve Tonic	39
28	SBL Drops No. 1	Hair Problems	22
	Scalptone Tablets		23
29	SBL Drops No. 2	Monthly abdominal pain	35
	Dysmin Tablets		36
30	SBL Drops No. 3	Urinary Tract Infection	48
31	SBL Drops No. 4	Management of BP	31
32	SBL Drops No. 5	Cervical Pain	12
33	SBL Drops No. 6	Joint Pain	27
34	SBL Drops No. 7	Sinusitis	43
35	Sleeptite Tablets	Sleeplessness	44
36	Stodal + Cough Syrup	Cough	11
37	Tonicard Gold Drops	Heart Complaints	25
38	Tonsilat Tablets	Tonsillitis	45
39	Thuja Roll-On	Warts	50
40	Tranquil Tablets	Anxiety & Stress	4
41	Utrofyne Syrup	Uterine Tonic	49
42	Vertefine Drops	Lumbago (Backache)	30
43	Woundwell Calendula Spray	First Aid for wounds	18
44	Wormorid Drops	Deworming	14
45	Zerogrype Drops	Gas & colic in children	19

Acute Complaints

Index by Disease (Alphabetical Order)

S.NO.	AILMENT	REMEDY	PAGE NO.
1	Cervical Pain	SBL Drops No. 5	12
2	Conjunctivitis & Eye Strain	Euphrasia 10 % Eye Drops	8
3	Earache	Mullein Ear Drops	15
4	Engorged rectal veins & Fissures	FP -Tabs & Ointment	17
5	Gas & Colic in children	Zerogrype Drops	19
6	Joint Pains	SBL Drops No. 6	27
7	Liver Tonic	LIV T	29
8	Lumbago (Backache)	Vertefine Drops	30
9	Monthly abdominal pain	SBL Drops No. 2	35
		Dysmin Tablets	36
10	Mouth Ulcers	Rinsout Drops	37
11	Sinusitis	SBL Drops No. 7	43
12	Tonsillitis	Tonsilat Tablets	45
13	Trauma & Accidents	AT-Tabs	46
14	Urinary Tract Infection	SBL Drops No. 3	48

Acute Complaints

Index by Specialty Product (Alphabetical Order)

S.NO.	AILMENT	REMEDY	PAGE NO.
1	AT-Tabs	Trauma & Accidents	46
2	Euphrasia 10 % Eye Drops	Conjunctivitis & Eye Strain	5
3	FP -Tabs & Ointment	Engorged rectal veins & Fissures	17
4	LIV T	Liver Tonic	29
5	Mullein Ear Drops	Earache	15
6	Rinsout Drops	Mouth Ulcers	37
7	SBL Drops No. 2	Monthly abdominal pain	35
	Dysmin Tablets		36
8	SBL Drops No. 3	Urinary Tract Infection	48
9	SBL Drops No. 5	Cervical Pain	12
10	SBL Drops No. 6	Joint pains	27
11	SBL Drops No. 7	Sinusitis	43
12	Tonsilat Tablets	Tonsillitis	45
13	Vertefine Drops	Lumbago (Backache)	30
14	Zerogrype Drops	Gas & Colic in children	19

New Introductions

S.No.	Remedy	Ailment	Page No.
1.	SBL Drops No. 8	Allergic Rhinitis	51
2.	SBL Drops No. 9	Cough	52
3.	SBL Drops No. 10	Hot Flashes	53
4.	Wipe Clear	Acne Lotion	54
5.	Burn-Rel Spray	Minor Burns & Scalds	55
6.	Ache-Nil Drops	Viral Infections	56
7.	Babchi Oil	Depigmentation & Psoriasis	Introducing Soon
8.	Damiagra Forte	Masculine Tonic	Introducing Soon
9.	Five Phos A+	Nervine Tonic	Introducing Soon
10.	Clean - feel	Feminine Hygiene Wash	Introducing Soon



NIXOCID

Tablets & Syrup

Heartburn, Acidity
& Flatulence



Acidity in the stomach results in burning sensation felt in the stomach and chest along with gas formation and sour belching.

Acidity is caused by excess intake of alcohol, smoking, spicy foods irregular eating habits and prolonged use of pain killers. Stress and anxiety is commonly associated with acidity.

Symptoms can be:

- * Pain in middle of the abdomen after eating or remaining empty stomach
- * Nausea
- * Burning sensation in stomach & chest (heartburn)
- * Sour belching

SBL's Nixocid provides relief from burning sensation in the stomach and reduces gas formation. Thereby, relieving signs and symptoms of acidity effectively.

CONTRA-INDICATION : No known contra-indication.

DOSAGE

Tablets Adults	2 tablets, 3-4 times a day, in acute conditions 2 tablets, 2-3 hourly
Children	1 tablet, 3-4 times a day
Syrup Adults	1 teaspoonful, 3-4 times a day
Children	½ teaspoonful, 3-4 times a day

or, as prescribed by the physician.

PRESENTATION :

Tablets : Bottle of 25 gm and 450 gm

Syrup : Bottle of 115 ml and 500 ml

COMPOSITION :

Natrum phosphoricum	3x	Carbo vegetabilis	3x
Robinia pseudacacia	3x	Lycopodium clavatum	3x

An In-house Clinically Proven research product of SBL

If you wish to receive a copy of the In-house clinical trial report, please send a self addressed envelope of size 10"x8" with stamp of Rs. 8.00 to Customer Relation Management Cell, SBL House, 2 commercial Complex, Shrestha Vihar, Delhi - 110 092





FE-MIN Tablets

For Anaemic
conditions



Anaemia can affect both males and females but women are more prone to anaemia which can occur at any stage of their life. In India, more than 50% of women suffer from some degree of anaemia. Severe anaemia is highest amongst pregnant women: adolescent girls are anaemic (Hb<12 g/dl), especially during period of menarche and the subsequent years.

During pregnancy and lactation, the requirement of nutrients increases manifold. Anaemia if not treated can worsen and may become an underlying cause for chronic ill health, impaired foetal development (during pregnancy) and reduced physical activity. Iron deficiency Anaemia is caused due to unbalanced diet and malnutrition, Lack of proper assimilation of the nutrients is a major cause of anaemia, heavy menstruation during menarche, menorrhagia (excessive bleeding), pregnancy & haemorrhoids (bleeding piles).

SBL's Fe-Min tablets, developed with validated homoeopathic medicines, offer a safe and effective way to treat anaemia. Fe-Min improves the absorption process by directly enhancing the nutrient-binding capacity of the cells, thereby relieving the signs and symptoms of anaemia.

RECOMMENDED FOR : * Girls during menarche, * Pregnant women, * Anaemic persons both males and females.

CONTRA-INDICATION : No known contra-indication

DOSAGE :

Adults : 2 tablets 4 times a day
Children : Half of adult dose
Or, as prescribed by the physician.

PRESENTATION : Bottle of 25 gm

COMPOSITION :

Calcarea fluorica	3x	Ferrum phosphoricum	3x
Calcarea phosphorica	3x	Kali phosphoricum	3x

An In-house Clinically Proven research product of SBL

If you wish to receive a copy of the In-house clinical trial report, please send a self addressed envelope of size 10"x8" with stamp of Rs. 8.00 to Customer Relation Management Cell, SBL House, 2 commercial Complex, Shrestha Vihar, Delhi - 110 092





FERRUMSIP

Syrup

For Anaemia



Anaemia is the condition when there is a decrease in number of Red Blood Cells (RBCs) or less than the normal quantity of haemoglobin in the blood. It can affect adults and children of both the sexes, although pregnant and adolescent girls are more susceptible to it. During pregnancy and lactation, the requirement of nutrients increases manifold.

Anaemia can be caused due to dietary deficiency or malnutrition, poor absorption of iron, multiple pregnancies, increased blood loss due to piles (haemorrhoids) or heavy menstrual bleeding resulting in fatigue, poor concentration or reduced work capacity, shortness of breath.

SBL's Ferrumsip is formulated with well balanced homoeopathic medicines that improve the absorption of Iron in the food by enhancing the capacity of the cells to absorb the nutrients.

Ferrumsip can be given for the following : * Anaemic condition, * Anaemia, * During pregnancy and lactation, * Due to heavy menstrual bleeding

SBL's Ferrumsip is an In-house clinically proven formulation that increases hemoglobin and removes debility.

CONTRA-INDICATION : No known contra-indication.

DOSAGE :

Adults	1 teaspoonful, 3-4 times a day.
Children	1/2 teaspoon 3-4 times a day.

Or, as prescribed by the physician.

PRESENTATION

: Bottle of 115ml, 180ml and 500 ml

COMPOSITION :

Ferrum phosphoricum	3x	Ferrum muriaticum	3x
Cinchona officinalis	3x	Natrum phosphoricum	1x
Kali phosphorium	3x	Ferrum metallicum	3x

An In-house Clinically Proven research product of SBL

If you wish to receive a copy of the In-house clinical trial report, please send a self addressed envelope of size 10"x8" with stamp of Rs. 8.00 to Customer Relation Management Cell, SBL House, 2 commercial Complex, Shrestha Vihar, Delhi - 110 092





TRANQUIL Tablets

Anxiety and stress



Stress is caused due to physical as well as mental reasons. Serious problems in day to day life such as in business, domestic upheavals, examinations etc. causes mental tension and anxiety.

Stress takes a serious toll on one's health leading to poor appetite, reduced energy and sleepless nights.

SBL's Tranquil is designed to promote and raise the 'brain threshold', which helps the body to cope with stress and anxiety resulting in sound natural sleep and improved energy levels. Tranquil is a natural de-stressing agent with;

* No narcotics, * No side effects, * Non addictive

INDICATIONS :

For Anxiety, tension, melancholy and disturbed sleep.

CONTRA-INDICATION : No known contra-indication

DOSAGE :

Adults	2 tablets, 4-6 times daily
Children	Half of adult's dose

Or, as prescribed by the physician.

PRESENTATION :

Bottle of 25 gm and 450 gm

COMPOSITION :

Abrus precatorius	3x	Kalium phosphoricum	3x
Aconitum napellus	3x	Calendula officinalis	3x
Viburnum opulus	3x	Zincum picricum	3x

An In-house Clinically Proven research product of SBL

If you wish to receive a copy of the In-house clinical trial report, please send a self addressed envelope of size 10"x8" with stamp of Rs. 8.00 to Customer Relation Management Cell, SBL House, 2 commercial Complex, Shrestha Vihar, Delhi - 110 092





CINERARIA MARITIMA EUPHRASIA



Eye Drops (CME)

Eye irritation / Opacity of lens

Eye is prone to various problems which includes infection and cataract (the opacity or clouding of lens). Cataract is a gradual, progressive thickening of the lens and is most commonly caused due to aging though a diabetic person is prone to get cataract at an earlier age.

SBL's Cineraria Maritima Euphrasia Eye Drops is a combination of time tested homoeopathic medicines, which helps keep the eye free from infections and also helps to curb the onset of cataract and is safe and effective for long term use. CME can be used by persons above the age of 40 and those suffering from Diabetes. CME is also useful in conditions of redness, irritation, watering of eyes, CME drops is made in isotonic solution of sodium chloride.

INDICATIONS :

* Irritation due to foreign bodies, * Halo around lights, * Hazziness.

DIRECTIONS FOR USE

Instill 1-2 drops in to the eye, 3 times a day.
The usage should be continued for several months

Or, as prescribed by the physician.

PRESENTATION :

Bottle of 5 ml and 10 ml

COMPOSITION :

Cineraria maritima	Q	Calendula officinalis	Q
Euphrasia	Q	Kali muriaticum	10x
Calcarea fluorica	10x	Magnesia carbonica	10x
		Silicea	10x





CINERARIA MARITIMA 10% Drops



Cataract is the opacity or clouding of the normally clear and transparent lens of the eye. It is a gradual, progressive thickening of the lens and is most commonly caused due to aging. Cataract development is characterized by decreased visual acuity or vision, double or blurred vision, increased sensitivity to light. A diabetic person is prone

to get cataract at an earlier age. As mentioned in

the homoeopathic literature Cineraria maritima is the drug of choice which helps in curbing the progress of opacities in the lens opacities (Dictionary of Practical Mental Medica, Clarke, J.H. Reprint Ed. 1995).

Cineraria maritima 10% is recommended in : *Haziness, * Halo around lights.

DIRECTIONS FOR USE

Instill 1-2 drops into the eye, 3 times a day.
--

The usage should be continued for several months
--

Or, as prescribed by the physician.

PRESENTATION :

Bottle of 5 ml and 10 ml

Also introducing alcohol free cineraria maritima.

COMPOSITION :

Cineraria maritima	Q
--------------------	---

SBL uses its quality Mother Tincture for making eye-drops while Other Companies use "Dilutions". The dilution of Mother Tincture is less effective than the Mother Tincture-as Mother Tincture contains more active ingredients than Dilution.





AF-TABS Tablets

For cold and flu



Flu or Influenza is a viral infection of the respiratory system – nose, throat and lungs. Common signs and symptoms of the flu generally begin with a sneeze followed by nasal congestion and discharge, fever over 100°F (38°C), bodyache, especially back, arms and legs, feeling of chilliness, headache, cough, fatigue and weakness.

Influenza viruses are constantly changing, with new strains appearing regularly. When the virus colonizes in the body, the body produces antibodies to fight the virus. However, the antibodies do not protect you from new strains of the virus.

Sbl's AF-TABS is an In-house clinically proven formulation with well balanced composition of homoeopathic medicines, which assist the body in producing antibodies to fight the colonization of the virus and brings quick and significant reduction in signs and symptoms of flu irrespective of the different strain of virus.

AF-TABS should be taken at the very first sign of the flu. AF-TABS is indicated for the following symptoms :

- * Sneezing, watery nasal discharge (running nose), * Fever, Bodyache, Headache, * Cough,
- * Fever, Flushing of face with redness of eyes.

CONTRA-INDICATION :

No known contra-indication.

DOSAGE :

Adults	2 tablets, every 3 hours or 4 times a day
Children	Half of the adult dose

Or, as prescribed by the physician.

PRESENTATION:

Tablets : Bottle of 25 g & 450g

COMPOSITION :

Bellis perennis	3x	Gelsemium sempervirens	3x
Bryonia alba	3x	Eupatorium perfoliatum	3x

An In-house Clinically Proven research product of SBL

If you wish to receive a copy of the In-house clinical trial report, please send a self addressed envelope of size 10"x8" with stamp of Rs. 8.00 to Customer Relation Management Cell, SBL House, 2 commercial Complex, Shrestha Vihar, Delhi – 110 092





EUPHRASIA 10%

Eye Drops

Eye Strain &
Conjunctivitis



Eye strain results in pain and tiredness of eyes due to prolonged use of eyes as in reading, sewing, working at the computer or watching TV or while driving for long. Eye strain may be accompanied by headache.

Conjunctivitis is the inflammation of the conjunctiva (a thin, clear membrane over the white part of the eye and, lining the eyelids as well) characterized by redness of the eyes and

discharge. It is usually caused by allergies, bacteria and viruses.

SBL's Euphrasia eye drops protects from pollution and eye strain and helps in reducing inflammation. SBL's Euphrasia eye drops is made in Isotonic solution of sodium chloride which is gentle to the eyes and is ideal for day to day care.

INDICATIONS : * Eye strain, tiredness and irritation in eyes, * Conjunctivitis, * Pain in eyes, redness, * Lachrymation (or watering of eyes), * Sand like sensation in eyes, * Dryness of eyes in computer users.

CONTRA-INDICATION : No known contra-indication

DIRECTION FOR USE:

Instill 1 or 2 drops in to eyes, 3 times daily.
Or, as prescribed by the physician.

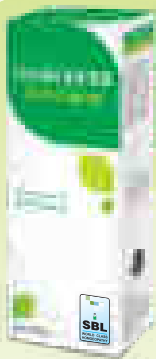
PRESENTATION :

Bottle of 5 ml and 10 ml

COMPOSITION :

Euphrasia officinalis Q in Isotonic solution of Sodium Chloride





DIABOHERB Syrup



Blood sugar level in the blood is controlled by insulin, a hormone produced by pancreas. When pancreas produces inadequate amounts of insulin or fails to produce any insulin, the blood sugar levels start increasing in the blood. This condition is known as Diabetes Mellitus. If uncontrolled, this can affect almost every organ in the body like the heart, kidneys, eyes, nerves, muscles etc.

NORMAL BLOOD GLUCOSE LEVELS

Fasting: 70–100 mg/dL

Post Prandial (PP): Less than 140 mg/dL

Symptoms of diabetes include increased thirst, increased hunger, frequent urination, fatigue or tiredness, slow healing wounds.

SBL's Diaboherb is a clinically proven formulation and is composed of well balanced combination of extracts of five potent herbs that manage blood sugar levels. Diaboherb is alcohol free and can be taken safely with Oral Hypoglycemic Agents (OHA).

INDICATIONS : * Frequent urination (polyuria), * Increased thirst (Polydipsia), * Increased appetite (Polyphagia)

CONTRA-INDICATION : No known contra-indication.

DOSAGE :

One teaspoonful 3 times daily, half an hour before meals

Or, as prescribed by the physician.

PRESENTATION : Bottle of 180 ml, 500 ml

COMPOSITION : Extracts of

Abroma augusta (Ulatkambal)	Gymnema sylvestre (Gurmar)
Cephalandra indica (Coccinia indica, Kanduri)	Syzygium jambolanum (Jamun beej)
Crataegus oxyacantha (Ban sangli)	

An In-house Clinically Proven research product of SBL

If you wish to receive a copy of the In-house clinical trial report, please send a self addressed envelope of size 10"x8" with stamp of Rs. 8.00 to Customer Relation Management Cell, SBL House, 2 commercial Complex, Shrestha Vihar, Delhi - 110 092





DIBONIL Drops



Blood glucose levels are controlled by insulin, a hormone produced by pancreas. When blood glucose level rises (for example, after eating food), insulin is released to control it. Absence or insufficient production or lack of response to insulin causes rise in blood glucose level. This condition is known as Diabetes mellitus. The normal blood sugar levels range from 70-100mg/dl (fasting) and 110-

140mg/dl (post-prandial/after eating).

Diabetes mellitus is characterized by:

* Excessive thirst * Frequent urination * Increased hunger * Weight loss * Fatigue * Blurry vision

Diabetes, a chronic medical condition, can be controlled and managed but it lasts for lifetime.

SBL's DIBONIL Drops is a combination of well proven homoeopathic medicines which manages the commonly associated problems of diabetes and has no side effects. Therefore it can be prescribed for longer duration.

INDICATIONS :

Increased frequency of urination, increased thirst, weakness and muscular pain.

DOSAGE :

10 drops in 1/4th cup of water, half an hour before meals, three times daily or as prescribed by the physician

CONTRA-INDICATION :

No known contra-indication.

PRESENTATION :

Bottle of 30ml

COMPOSITION :

Crataegus oxyacantha	Q	Gymnema sylvestre	Q
Acidum phosphoricum	Q	Abroma augusta	Q
Syzygium jambolanum	Q	Helonias dioica	Q
Cephalandra indica	Q		





STODAL + Cough Syrup

All type of Cough



Most cough syrups in the market contain narcotic derivative like condeine which has narcotic effect. This can lead to addiction as well as reduce mental activity causing drowsiness. These cough syrups should not be given to children as well as to pregnant and lactating mothers.

SBL's STODAL + Cough Syrup with no narcotics helps in facilitating recovery from cough and wheezes and thus, often helps in

avoiding usage of antibiotics.

* STODAL + Cough Syrup is a safe and effective remedy, and is well suited for all age groups

* Has no narcotics

* Safe for pregnant women, children and elderly persons

INDICATIONS : * Dry or wet cough, * Irritation in throat

CONTRA-INDICATION : No known contra-indication.

DOSAGE :

Adults	One tablespoonful, 3-5 times a day
Children	One teaspoonful, 3-5 times a day

Or, as prescribed by the physician.

PRESENTATION : Bottles of 60 ml, 115 ml, 180 ml and 500 ml

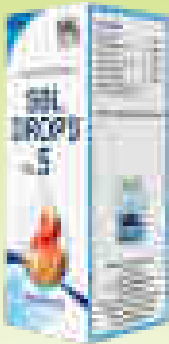
COMPOSITION :

Pulsatilla nigricans	3x	Rumex crispus	3x
Justicia adhatoda	3x	Ipecacuanha	3x
Spongia tosta	3x	Sticta pulmonaria	3x
Coccus cacti	3x	Blatta orientalis	Q
Drosera rotundifolia	Q	Ephedra vulgaris	Q
Piper nigrum	Q	Zingiber	Q
Ocimum sanctum	Q	Polygala senega	Q
Balsum tolu			

An In-house Clinically Proven research product of SBL

If you wish to receive a copy of the In-house clinical trial report, please send a self addressed envelope of size 10"x8" with stamp of Rs. 8.00 to Customer Relation Management Cell, SBL House, 2 commercial Complex, Shrestha Vihar, Delhi - 110 092





SBL DROPS No. 5

Cervical pain



Cervical pain (neck pain) is a commonly encountered complaint which may be experienced by both male and female and young or old. Inflammation of the vertebral joints is one of the causes of neck and shoulder pain. Everyday wear and tear may start these changes due to faulty everyday routine like working on computers for long, poor posture, driving for long hours, lifting weights, exercise, history of

injury, severe arthritis/osteoporosis & family history.

Over time these changes can press down on (compress) one or more of the nerve roots resulting in painful condition. In advanced cases, there may be abnormal growths or spurs on the bones of the spine (vertebrae).

SBL DROPS No. 5 is an In-house clinically proven formulation which helps bring prompt relief in cervical pain and associated symptoms like • Pain around shoulder blade which may extend down the arm • Neck stiffness • Headache • Vertigo • Numbness, 'pins and needles' sensation in part or whole of the arm • Muscle weakness

CONTRA-INDICATION : No known contra-indication.

DOSAGE :

10-15 drops in 1/4th cup of water, 3-4 times a day or as prescribed by the physician

PRESENTATION :

Bottle of 30 ml

COMPOSITION :

Bryonia alba	3x	Hypericum perforatum	3x
Cimicifuga racemosa	3x	Ledum palustre	3x
Colocynthis	3x	Ruta graveolens	3x

An In-house Clinically Proven research product of SBL

If you wish to receive a copy of the In-house clinical trial report, please send a self addressed envelope of size 10"x8" with stamp of Rs. 8.00 to Customer Relation Management Cell, SBL House, 2 commercial Complex, Shrestha Vihar, Delhi - 110 092





DENTON Tablets / Syrup

Delayed and
Difficult Dentition



The development of teeth is a natural phenomenon, which usually occurs when the child is between 6-9 months of age. This natural process is termed as 'Dentition'.

The dentition process can be a very uncomfortable and painful phase for many children and can lead to complaints like diarrhoea, gripes, drooling of saliva, irritability, restlessness, desire to bite, refusal to feed etc. Such

condition is almost traumatic for the child.

SBL's Denton Tablets and Syrup helps in the absorption of calcium and phosphates. Denton is an In-house clinically proven product, composed of well-balanced homoeopathic medicines, which relieves practically all the signs and symptoms associated with dentition.

INDICATIONS : Gum swelling, Irritability, Refusal of Feed, Drooling of saliva, Vomiting, Loose stools, Abdominal pain (colic)

CONTRA-INDICATION : No known contra-indication.

DOSAGE :

TABLETS	
Infant and children up to 3 years	1 tablet every 3 hours or 4 times a day
Children above 3 years	2 tablet every 3 hours or 4 times a day
SYRUP	
Infants	½ teaspoon 3-4 times a day

Or, as prescribed by the physician.

PRESENTATION :

Tablets – Bottle of 25 gm & 450 g, Syrup – Bottle of 115 ml

COMPOSITION :

Calcarea phosphorica	3x	Kali Phosphorica	3x
Chamomilla vulgaris	3x	Magnesia phosphoricum	3x
Ferrum phosphoricum	3x	Silicea	3x
Kali muriaticum	3x		

An In-house Clinically Proven research product of SBL

If you wish to receive a copy of the In-house clinical trial report, please send a self addressed envelope of size 10"x8" with stamp of Rs. 8.00 to Customer Relation Management Cell, SBL House, 2 commercial Complex, Shrestha Vihar, Delhi – 110 092





WORMORID Drops

For Deworming



Worm infestation is a common problem in children. Most common worms affecting children are pinworms, roundworms, tapeworms and hookworms. These worms reside in the intestines and absorb the nutrients, causing malnutrition in the child.

Children infested with worms can show symptoms of persistent scratchy or itching bottom (anus), poor appetite, weight loss; leading

to anaemia, stunted physical and mental growth.

SBL's Wormorid Drops is an In-house clinically proven, well-balanced composition of homoeopathic medicines which act as deworming agent for almost all types of worms.

INDICATIONS : * Itching bottom, * Grinding of teeth, * Variable appetite, * Irritability, * Weight loss, * Pica (desire to eat indigestible things like mud, chalk etc), * Abdominal pain and distension, * Restless sleep.

CONTRA-INDICATION :

No known contra-indication.

DOSAGE :

Infants	5 drops, 3-4 times a day
Children	10 drops, 3-4 times a day

Or, as prescribed by the physician.

PRESENTATION :

Bottle of 30 ml

COMPOSITION :

Cina	3x	Sabadilla	3x
Chelone glabra	Q	Teucrium marum verum	3x
Filix mas	3x		

An In-house Clinically Proven research product of SBL

If you wish to receive a copy of the In-house clinical trial report, please send a self addressed envelope of size 10"x8" with stamp of Rs. 8.00 to Customer Relation Management Cell, SBL House, 2 commercial Complex, Shrestha Vihar, Delhi - 110 092





MULLEIN

Ear Drops

Earache



Earache (Otalgia) is very common medical problem for both children and adults. The pain of earache results from inflammation and swelling of the structures that make up the ear, including the external auditory canal, the tympanic membrane, and the middle ear.

Otitis externa is a skin infection of the outer ear canal. It is the area where wax forms and infection often occurs after swimming (commonly referred to as swimmer's ear).

Otitis media is an infection of the middle ear and eardrum commonly seen in infants and younger children. Otitis media also may affect older children and adults.

Pain in the ear can be accompanied with fever, vomiting, increased irritability or crying, ear pulling, Eating less than usual and refusing favorite meals, difficulty in sleeping, especially on sides, resting the ear, reduced play or visible reduction in the activity level of the child.

SBL's Mullein Ear drops is an In-house clinically proven formulation containing well balanced homoeopathic medicine which helps in relieving the painful symptoms that originate in the ear.

INDICATIONS : for using Mullein ear drops, * Pain in ear due to inflammation of middle ear (otitis media), * Painful eruptions of external ear, * Fungal infection, * Itching and irritation of the ear, * Dry scaling of inner ear with a sense of obstruction, * Swimmer's ear.

CONTRA-INDICATION : No known contra-indication

DOSAGE :

Instill 4 drops into the ear 4 times a day

Or, as prescribed by the physician.

PRESENTATION : Bottle of 10 ml

COMPOSITION :

Mullein flower	Acidum boracicum
Glycerine	Acidum carbolicum
Acidum benzoicum	Chloroformium





ALFALFA Malt

Energy Stimulant



Day to day activities can make you tired and exposure to various pollutants can make you sick. To boost your immune system and keep your body functions going take Alfalfa malt.

ALFALFA is one of the most nutritious plants on earth as it contains essential Amino acids, also Vitamins and Minerals like Calcium and Magnesium.

Malt made from germinated barley is a nutritionally valuable food supplement and a rich source of Proteins, Carbohydrates, Minerals and Vitamins.

ALFALFA MALT is a potent energy stimulant enriched with minerals, amino-acids fortified and with potent Homoeopathic medicinal herbs well blended in a delicious chocolate flavoured malt base.

ALFALFAMALT is useful in the following conditions :

* Persons with general debility, weakness, emaciation, loss of appetite, poor or retarded growth, * For anxiety states, stress and nervousness, * Sleeplessness, tiredness from worry, tension and overwork, * In convalescent stages of fever, following viral illness, acute or chronic diarrhoeal states, * Pregnant women and lactating mothers.

CONTRA-INDICATION : No known contra-indication.

DOSAGE :

For convalescing individuals	1 tablespoonful, 2 times daily
For pregnant and lactating women	1 tablespoonful, 3 times daily
Children	1-2 teaspoonful, 2-3 times daily

PRESENTATION : Bottles of 250 gm and 450 gm

COMPOSITION :

Alfalfa	Q	Avena sativa	Q
Ginseng	Q	Cinchona officinalis	2x
Hydrastis canadensis	2x	Kalium phosphoricum	3x
Kalium arsenicosum	4x	Ferrum aceticum	3x
Calcarea phosphorica	3x		
In Malt extract and invert sugar			

An In-house Clinically Proven research product of SBL

If you wish to receive a copy of the In-house clinical trial report, please send a self addressed envelope of size 10"x8" with stamp of Rs. 8.00 to Customer Relation Management Cell, SBL House, 2 commercial Complex, Shrestha Vihar, Delhi - 110 092





FP-TABS & FP-OINTMENT Tablets & Ointment

For Fissures
& Engorged rectal veins

Put simply, 'piles' are the swollen blood vessels around the anus and in the rectum which will stretch under pressure and may swell or bulge.

Fissures are cuts around the anus which can bleed and cause lot of pain. Fissures and Piles are caused due to chronic constipation or diarrhea, lifting heavy weights regularly, Pregnancy or Straining when passing a stool.

SBL's FP-TABS taken orally and FP-OINTMENT applied locally is an ideal combination to treat engorged rectal veins and fissures.

It helps in curing anal fissures and engorged rectal veins by reducing pain and venous congestion around the anus.

FP-OINTMENT acts as anti-haemorrhagic and has pain relieving properties giving soothing effect.

CONTRA-INDICATION : No known contra-indication.

DOSAGE :

Tablets-Adults	2 Tablets taken orally, every 3 hours daily for 1-2 weeks
Ointment	Apply locally twice daily before and after stool, for 1-2 weeks, using the applicator if internal administration is required.

Or, as prescribed by the physician.

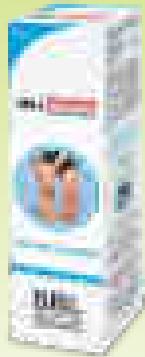
PRESENTATION : FP-Tabs: Bottle of 25 gm and 450 gm, FP-Ointment : Tube of 25 gm for external use only.

COMPOSITION :

TABLETS			
Ratanhia	3x	Hamamelis virginica	3x
Aesculus hippocastanum	3x	Aloe socotrina	3x
Calcarea fluorica	3x		
OINTMENT			
Hamamelis virginica	Q	Hydrastic candensis	Q
Aesculus hippocastanum	Q	Ratanhia	Q
Paeonia officinalis	Q	Viburnum prunifolium	Q
Paraffinum Molle Album			
q.s. to 100 g			

An In-house Clinically Proven research product of SBL

If you wish to receive a copy of the In-house clinical trial report, please send a self addressed envelope of size 10" x 8" with stamp of Rs.8.00 to Customer Relation Management Cell, SBL House, 2 commercial Complex, Shrestha Vihar, Delhi - 110 092



SBL's WOUNDWELL Calendula Spray



First aid in injuries

SBL's Woundwell is a safe & quick-acting antiseptic spray. It is an excellent healing agent in cases of open wounds, bruises, cuts & injuries. SBL's Woundwell is a handy as well as easy-to-use product.

Handy & ideal to be kept at home or workplace or in your sports bag.

WARNING: For external use only. Avoid contact with eyes. If skin irritation develops; complaints worsen, recur or persist for more than 72 hours, discontinue use and consult a physician.

DIRECTIONS FOR USE:

Adult and children above 2 years of age :

Spray on the injured part or use as a compress. Saturate a sterile gauze, place on wound and secure with a bandage.

PRESENTATION :

Bottle of 50 ml

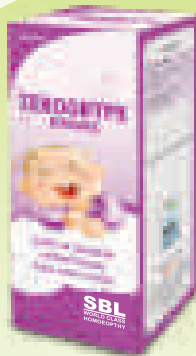
COMPOSITION :

Calendula officinalis	Q	Echinacea angustifolia	Q
-----------------------	---	------------------------	---

An In-house Clinically Proven research product of SBL

If you wish to receive a copy of the In-house clinical trial report, please send a self addressed envelope of size 10"x8" with stamp of Rs. 8.00 to Customer Relation Management Cell, SBL House, 2 commercial Complex, Shrestha Vihar, Delhi - 110 092





ZEROGRYPE Drops

Gas and Colic in Children



Colic is the most common and frequently seen problem in infants and causes great anxiety to mothers. Painful cries (or colicky cries) are urgent, discomforting and irritable. These are difficult to ease with regular means. Why some babies suffer from colic or gripes is difficult to assess but it could be due to trapped gas in intestine (while feeding or crying) or due to Gastro-

esophageal reflux or acid reflux.

The mother can identify signs of colic if the baby cries vigorously for long periods despite efforts to relief, shows excessive episodic irritability. stiffens the body, arches the back, brings the knees to chest and clenches the fist in pain and may be a little relieved after passing gas or stool. Conventional gripe mixtures can be addictive or may have side effects.

SBL's Zerogrype Drops is an In-house clinically proven product, composed of well balanced homoeopathic medicines, which is invaluable for bringing relief from indigestion flatulence and colic babies.

INDICATIONS : * Colic (in infants and children), * Gas in abdomen, * Abdomen may appear hard and distended, * Irritability and crying, * Poor appetite, * Restless sleep

CONTRA-INDICATION : No known contra-indication.

DOSAGE :

Infants	5 drops, 3-4 times a day
Children	10 drops, 3-4 times a day

Or, as prescribed by the physician.

PRESENTATION :

Bottle of 30 ml

COMPOSITION :

Chamomilla vulgaris	3x	Magnesia phosphoricum	3x
---------------------	----	-----------------------	----

An In-house Clinically Proven research product of SBL

If you wish to receive a copy of the In-house clinical trial report, please send a self addressed envelope of size 10"x8" with stamp of Rs. 8.00 to Customer Relation Management Cell, SBL House, 2 commercial Complex, Shrestha Vihar, Delhi - 110 092





ALFALFA Tonic

Fortified with Ginseng



In the present day situation every one goes through tremendous stress and strain and tension which spares no one.

ALFALFA TONIC contains various well blended homoeopathic medicines and herbal tinctures fortified with Ginseng. A product enriched with nutrients, natural amino-acids, vitamins and minerals to restore

physical as well as mental well being.

It is useful in anxiety, neurasthenia, general debility, insomnia (sleeplessn), loss of appetite, during convalescence and can be taken during pregnancy and lactation.

It is safe and has no side effects.

CONTRA-INDICATION : No known contra-indication.

DOSAGE :

Adults	1 tablespoonful, 3 times daily
Infants and children below 2 years	½ teaspoonful, before meals, 3 times a day
Children above 7 years	1 teaspoonful, before meals, 3 times a day

Or, as prescribed by the physician.

PRESENTATION :

Bottles of 115 ml, 180 ml and 500 ml

COMPOSITION :

Alfalfa	Q	Avena sativa	Q
Ginseng	Q	Cinchona officinalis	Q
Hydrastic canadensis	Q	Kalium arsenicosum	6x
Ferrum aceticum	3x	Calcarea phosphorica	3x
Kalium phosphoricum	3x		





RITE-HITE Tablets

Growth Promoter



Growth in children is determined by internal and external factors. Although growth is determined primarily by the amount of growth hormone the human body produces, the production of growth hormone can be altered under certain circumstances. There are a lot of factors that play a role in child's overall height. Gender, nutritional input, genetic

makeup, physical exercise, amount of sleep and

various medical conditions are the factors which may affect child's growth rate and height.

SBL's Rite-Hite is an In-house clinically proven formulation which contains well balanced homoeopathic medicines. Rite-Hite helps to achieve the optimal balance of factors like genetics, hormonal balance, nutritional status and general health and thereby promotes optimal growth.

INDICATIONS :

Rite-Hite promotes optimal growth in children who have :

* Imperfect assimilation, * Do not grow or develop, * Feeble digestion, * Anaemia, * Lack of concentration, * Poor memory.

CONTRA - INDICATION : No known contra-indication.

DOSAGE :

Children below 13 years	1 tablet once a day
Children above 13 years	2 tablets once a day

Or, as prescribed by the physician.

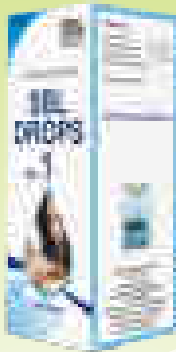
PRESENTATION :

Bottle of 25g & 450 g

COMPOSITION :

Baryta carbonica	3x	Natrum muriaticum	3x
Calcarea phosphorica	3x	Silicea	3x





SBL DROPS No. 1

Hair fall & Dandruff



Hair fall is a normal process but when it becomes excessive, it becomes a matter of concern and even distress for some. Hair fall may be accompanied with dandruff, splitting of hair and itching on scalp.

SBL Drops No. 1 checks hair fall and promotes hair growth.

INDICATIONS :

- Excessive Hair fall • Thinning of hair • Dandruff • Itching & irritation of scalp

CONTRA-INDICATION :

No known contra-indication.

DOSAGE :

10-15 drops in 1/4th cup of water 3-4 times a day or as advised by the physician

PRESENTATION :

Bottle of 30ml

COMPOSITION :

Arnica montana	3x	Acidum phosphoricum	3x
Lycopodium	3x		

An In-house Clinically Proven research product of SBL

If you wish to receive a copy of the In-house clinical trial report, please send a self addressed envelope of size 10"x8" with stamp of Rs. 8.00 to Customer Relation Management Cell, SBL House, 2 commercial Complex, Shrestha Vihar, Delhi - 110 092





SCALPTONE Tablets



Healthy Hair Roots
(internal care)

The scalp is prone to a variety of diseases and disorders including familiar problems such as excessive hair loss and dandruff. Falling of hair is a natural process, but when it becomes excessive leading to thinning of hair, or causing bald spots on the scalp, it becomes an issue of concern.

SCALPTONE is a combination of well-balanced homoeopathic ingredients which helps prevent excessive hair loss.

SCALPTONE helps in improving the circulation and helps in the absorption of minerals required for the growth of hair. SCALPTONE also reduces itching, irritation and dryness of scalp, thinning and splitting of hair, dandruff.

CONTRA-INDICATION :

No known contra-indication.

DOSAGE :

Adults	2 tablets, 4-6 times daily
Children	1 tablet, 4 times daily

Ors, as prescribed by the physician.

PRESENTATION:

Bottles of 25 gm and 450 gm

For best results use SBL's Jaborandi/Montana hair oil and shampoo along with SCALPTONE Tablets.

COMPOSITION :

Acidum fluoricum	3x	Acidum phosphoricum	3x
Natrum muriaticum	3x	Calcarea phosphoricum	3x
Badiaga	3x		

An In-house Clinically Proven research product of SBL

If you wish to receive a copy of the In-house clinical trial report, please send a self addressed envelope of size 10"x8" with stamp of Rs. 8.00 to Customer Relation Management Cell, SBL House, 2 commercial Complex, Shrestha Vihar, Delhi - 110 092





RELAXHED

Drops / Tablets

For Headache



Headache is a common complaint and can be caused due to various reasons like hunger, skipping meals, lack of sleep, changes in sleep patterns or hangover due to alcohol use.

Tension headache is sensation of dull pressure or tightness around the forehead. It is the most common type of headache among adults and adolescents and is

generally precipitated by emotional stress related

to family and friends, work, or school; excessive medication use; tension and depression.

Migraines typically present with unilateral (one sided) headache sometimes with nausea, vomiting and visual disturbances. It is more common in females.

SBL's Relaxhed is a well established product with a balanced combination of well proven homoeopathic medicines that reduces tension, and digestive problems to bring relief from acute as well as chronic headaches caused by:

* Heat of sun, * Indigestion, * Migraine, headache associated with nausea and vomiting.

CONTRA-INDICATION : No known contra-indication.

DOSAGE :

Drops: Adult	10-15 drops in ¼th cup of water, 3-4 times a day or hourly during severe headache.
Drops: Children	Half of the adult dose.
Tablets : Adult	2 tablets, 4 times a day or hourly during severe headache.
Tablets : Children	Half of the adult dose.

Or, as prescribed by the physician.

PRESENTATION :

Drops : Bottle of 30 ml

Tablets : Bottle of 25 g & 450 g

COMPOSITION :

Cedron	3x	Spigelia anthelmia	3x
Ignatia amara	3x	Usnea barbata	3x
Iris versicolor	3x		





TONICARD GOLD DROPS

Heart Problems



Various factors such as stress, bad eating habits, smoking, sedentary life style, heredity and Diabetes can lead to various heart problems.

Your heart is precious, keep it functioning well with SBL's TONICARD GOLD DROPS.

SBL's TONICARD made with balanced combination of well selected homoeopathic medicines contains mineral that purifies and

maintains the viscosity of the blood.

TONICARD is a dependable heart tonic and acts as a preventive as well as a curative in various heart problems.

INDICATIONS : *Excellent adjunct to cardiac therapies and protects against potential heart problems, * Palpitation, * Pain in chest on exertion, * High blood pressure.

TONICARD

* Increases effort tolerance, * Relieves palpitation, breathlessness and tachycardia, * Increases force of myocardial contraction, * Improves coronary and peripheral circulation, * Tones up heart muscles

CONTRA-INDICATION : No known contra-indication.

DOSAGE :

Adults (Regular dose)	20-30 drops in ¼th cup of water, 3 times daily
For sudden unexpected symptoms	40 drops in ¼th cup of water

Or, as prescribed by the physician.

PRESENTATION : Bottles of 30 ml and 100 ml

COMPOSITION :

Cactus grandiflorus	Q	Crataegus oxyacantha	Q
Convallaria majalis	Q	Valeriana officinalis	Q
Strophanthus hispidus	Q	Aurum muriaticum natronatum	3x
Camphora	2x		

An In-house Clinically Proven research product of SBL

If you wish to receive a copy of the In-house clinical trial report, please send a self addressed envelope of size 10"x8" with stamp of Rs. 8.00 to Customer Relation Management Cell, SBL House, 2 commercial Complex, Shrestha Vihar, Delhi - 110 092





KALMEGH SYRUP & PAEDIATRIC DROPS



Indigestion &
Flatulence

Impaired digestion or indigestion is characterised by loss of desire to eat, fullness or heaviness in abdomen, gas formation, eructations, nausea, vomiting & constipation. Indigestion, especially of fats, may be the result of liver disorder. Poor liver functioning can be due to consuming contaminated food & water, excessive alcohol intake, sedentary lifestyle, prolonged consumption of drugs such as

antibiotics, aspirin and pain killers

SBL's KALMEGH Syrup & KALMEGH Paediatric Drops relieve indigestion and improve appetite effectively.

INDICATIONS : Indigestion, flatulence (gas formation), constipation, covers wide range of gastric and hepatic complaints

CONTRA-INDICATION :

No known contra-indication.

DOSAGE :

Kalmegh Paediatric Drops

Children: 5-10 drops three times daily or as prescribed by the physician.

Kalmegh Syrup

Adults: 1 teaspoonful

Children: ½ teaspoonful

Three times daily or as prescribed by the physician

PRESENTATION :

Kalmegh Paediatric Drops: Bottle of 30ml

Kalmegh Syrup: Bottles of 115ml, 180ml

COMPOSITION :

Andrographic paniculata	2x	Chelidonium majus	1x
Carduus marianus	2x	Chionanthus virginica	1x
Carica papaya	2x	Myrica cerifera	1x





SBL Drops No. 6

Joint Pain



Pain in joints refers to discomfort, aches and soreness in any of the body's joints. It is a common complaint and can range from mild to severe. It may go away after a few weeks (acute), or last for several weeks or months (chronic). Even short term pain and swelling in the joints can affect the quality of life.

It may occur due to •Injury •Overuse• Ageing •Inflammatory conditions like arthritis, bursitis, tendonitis •Infectious diseases like influenza

SBL DROPS No. 6 is an In-house clinically proven composition of Homoeopathic medicines which relieves pain in joints efficaciously.

INDICATIONS:

Arthritis, swelling, joint and muscle pain.

CONTRA-INDICATION:

No known contra-indication.

DOSAGE:

10-15 drops in 1/4th cup of water, 3-4 times a day or as prescribed by the physician.

PRESENTATION : Bottle of 30 ml

COMPOSITION :

Berberis vulgaris	3x	Rhododendron ferrugineum	3x
Dulcamara	3x	Rhus toxicodendron	6x
Nux vomica	4x		

An In-house Clinically Proven research product of SBL

If you wish to receive a copy of the In-house clinical trial report, please send a self addressed envelope of size 10"x8" with stamp of Rs. 8.00 to Customer Relation Management Cell, SBL House, 2 commercial Complex, Shrestha Vihar, Delhi - 110 092





PELVORIN Tablets

For Leucorrhoea



Leucorrhoea is a condition in which there is excessive white discharge from the vagina. The discharge may be white or thick, yellow in colour and foul smelling with irritation, burning or itching in genital organs. This could be accompanied with backache or pain in the lower abdomen. Leucorrhoea may be due to inflammatory conditions of the cervix or vagina or

due to hormonal disturbances, improper hygienic conditions or even if one is diabetic. SBL's Pelvorin Tablets is an In-house clinically proven formulation, composed of well balanced homoeopathic medicines which strengthens the female reproductive system as it brings relief from the following symptoms :

* Leucorrhoea and its associated symptoms, * Pain in legs, Pallor of face, * Pain in back and abdomen, * Itching, Redness, * Burning while passing urine

CONTRA-INDICATION :

No known contra-indication

DOSAGE :

Adults	2 tablets, 4 times a day for 2 weeks followed by 2 tablets 3 times a day for next 2 weeks.
--------	---

Or, as prescribed by the physician.

PRESENTATION :

Bottle of 25 g & 450 g

COMPOSITION :

Alumina	3x	Kreosotum	3x
Borax	3x	Hydrastic canadensis	3x
Calcarea ova testa	3x		

An In-house Clinically Proven research product of SBL

If you wish to receive a copy of the In-house clinical trial report, please send a self addressed envelope of size 10"x8" with stamp of Rs. 8.00 to Customer Relation Management Cell, SBL House, 2 commercial Complex, Shrestha Vihar, Delhi - 110 092





LIV T

SBL's LIVER TONIC
(For Adults and Paediatric)

Liver Disorders



Liver, the largest and a vital organ in our body is constantly under attack by practically everything we eat, drink and breathe. Like contaminated water, food, alcohol, drugs, smoke, pollution, virus. All these bring the liver under stress leading to poor functioning of the liver giving rise to jaundice, hepatitis, indigestion, fatty liver.

SBL's LIV T is especially formulated to combat various liver disorders caused by chronic gastric indiscretion, infection (viral and bacterial), drugs, chemicals and alcohol.

LIV T treats various liver disorders, protects and improves liver functions and helps to clear toxins from the body.

CONTRA-INDICATION :

No known contra-indication.

DOSAGE :

LIV T Adults	Two teaspoonful, 3-4 times a day
Children	One teaspoonful, 3-4 times a day
LIV T (Paed) Children	One teaspoonful, 3 times a day

Or, as prescribed by the physician.

PRESENTATION :

Bottles of 60 ml, 115 ml, 180 ml and 500 ml.

COMPOSITION :

Carduus marianus	Q	Chelidonium majus	Q
Taraxacum	Q	Ipecacuanha	Q
Andrographic paniculata (Kalmegh)	Q	Hydrastic canadensis	Q
Podophyllum peltatum	Q		

An In-house Clinically Proven research product of SBL

If you wish to receive a copy of the In-house clinical trial report, please send a self addressed envelope of size 10"x8" with stamp of Rs. 8.00 to Customer Relation Management Cell, SBL House, 2 commercial Complex, Shrestha Vihar, Delhi - 110 092





VERTEFINE

Drops

For lumbago (Backache)



Nearly everyone at some point in their life get back pain that interferes with work, daily activities, or recreation. Lower backache (Lumbago) is a crippling painful condition, which restricts mobility and flexibility.

Lumbago occurs due to strains of tears to the muscles or ligaments that support the back, due to lifting heavy weight or exertion, muscle spasm, Spondylosis, or occupational

circumstances (bad posture) like sitting for a long time on the table.

SBL's Vertefine drops is a well balanced composition of homoeopathic medicines that treats lumbago speedily thereby relieving the pain and discomfort. Vertefine improves mobility and flexibility.

INDICATIONS : * Severe pain and spasms in lower back, * Backache with stiffness, * Spondylosis, * Tingling & numbness in the back, buttocks or down along one or both legs.

CONTRA-INDIATION :

No known contra-indication.

DOSAGE :

10-15 drops in 1/4th cup of water, 3-4 times daily

Or, as prescribed by the physician.

PRESENTATION :

Bottle of 30 ml

COMPOSITION :

Berberis vulgaris	3x	Ledum palustre	3x
Bryonia alba	3x	Rhus toxicodendron	6x
Cimicifuga	3x		

An In-house Clinically Proven research product of SBL

If you wish to receive a copy of the In-house clinical trial report, please send a self addressed envelope of size 10"x8" with stamp of Rs. 8.00 to Customer Relation Management Cell, SBL House, 2 commercial Complex, Shrestha Vihar, Delhi - 110 092





SBL DROPS No. 4 Blood Pressure



Blood pressure is a measurement of the force against the walls of arteries as heart pumps blood through the body. Hypertension is the term used to denote high blood pressure. Normal blood pressure is around 120/80mmHg and high blood pressure is when the blood pressure is 140/90mmHg or above.

Most people have no signs or symptoms, although a few people may have dull headache, anxiety, dizzy spells or frequent nosebleeds. Risk factors of hypertension are Family history, obesity, tobacco smoking, too much salt (sodium) intake, drinking alcohol, stress.

SBL DROPS No.4 is an effective formulation for management of symptoms associated with hypertension.

INDICATIONS: Helps in regulating blood pressure, symptoms of anxiety, headache.

CONTRA-INDICATION:

No known contra-indication.

DOSAGE:

10-15 drops in 1/4th cup of water 3-4 times a day or as advised by the physician

PRESENTATION :

Bottle of 30 ml

COMPOSITION :

Rauvolfia serpentina	Q	Crataegus oxyacantha	2x
Viscum album	Q	Veratrum viride	3x
Cactus grandiflorus	Q	Arnica montana	3x
Passiflora incarnata	Q	Kali phosphoricum	3x

An In-house Clinically Proven research product of SBL

If you wish to receive a copy of the In-house clinical trial report, please send a self addressed envelope of size 10"x8" with stamp of Rs. 8.00 to Customer Relation Management Cell, SBL House, 2 commercial Complex, Shrestha Vihar, Delhi - 110 092





DAMIAGRA Drops



Erectile Dysfunction (ED) is a common type of male dysfunction, It may cause stress, cause relationship problems or affect the self-confidence. The problem can affect any age group, but more common as men age.

ED can arise due to stress, anxiety, relationship difficulties, depression or due to physical causes or some bodily ailment like diseases of nervous system which affects the

nerves, high blood pressure, diabetes, smoking etc.

SBL's Damiaagra Drops is a composed of well balanced homoeopathic ingredients which help the patients regain their lost confidence.

CONTRA-INDICATION :

No known contra-indication.

DOSAGE :

Adults	15-20 drops in 1/4th cup of water, 3-4 times daily
--------	--

Or, as prescribed by the physician.

PRESENTATION :

Bottle of 30 ml.

COMPOSITION :

Damiana	Q	Selenium	3x
Lycopodium clavatum	3x	Yohimbinum	Q
Agnus castus	Q	Acidum phosphoricum	3x
Caladium seguinum	3x		

An In-house Clinically Proven research product of SBL

If you wish to receive a copy of the In-house clinical trial report, please send a self addressed envelope of size 10"x8" with stamp of Rs. 8.00 to Customer Relation Management Cell, SBL House, 2 commercial Complex, Shrestha Vihar, Delhi - 110 092





B-TRIM Drops



Obesity is abnormal or excessive fat accumulation that presents a risk to health. Obesity can be due to excessive intake of food, lack of exercise (sedentary habits), hormonal imbalance, weight gain after delivery, hereditary etc. Obesity, if not checked can lead to diseases like diabetes, cardiovascular disease, joint disease, difficulty in breathing during sleep (sleep apnoea).

SBL's B-TRIM Drops helps improving the metabolic rate and also removing excess water content.

SBL's B-TRIM is an In-house clinically proven product, composed of well balanced homoeopathic ingredients. Those who wish to lose weight should also control their diet and do regular physical exercise.

CONTRA-INDICATION :

Pregnant and lactating ladies

SIDE EFFECT :

Initially some persons may have mild diarrhoea, which will settle down after few days.

DOSAGE :

Adults	10-15 drops in ¼ cup of water, 3-4 times
--------	--

Or, as prescribed by the physician.

PRESENTATION :

Bottle of 30 ml

COMPOSITION :

Calcera carbonica	3x	Phytolacca berry	Q
Fucus vesiculosus	Q	Thyroidinum	3x

An In-house Clinically Proven research product of SBL

If you wish to receive a copy of the In-house clinical trial report, please send a self addressed envelope of size 10"x8" with stamp of Rs. 8.00 to Customer Relation Management Cell, SBL House, 2 commercial Complex, Shrestha Vihar, Delhi - 110 092





PHYTOLACCA BERRY

Tablets



Obesity is abnormal or excessive fat accumulation that presents a risk to health. Obesity can be due to excessive intake of food, lack of exercise (Sedentary habits), hormonal imbalance as seen in thyroid disorder, ovarian disorder, weight gain after delivery or even hereditary.

Obesity is major risk factor for a number of chronic diseases like :

* Diabetes, * Cardiovascular disease, * Joint disease, * Difficulty in breathing during sleep (sleep apnoea), * Cancer (breast, intestine, endometrium)

The most common measure of obesity is the body mass index or BMI.

BMI is a person's weight (in kilograms) divided by the square of his or her height (in metres)

BMI of 18.5 to 24.9 is Normal, BMI of 25 to 29.9 is over weight, BMI over 30 is OBESE.

SBL's Phytolacca Berry Tablets is an In-house clinically proven medicine which helps to improve metabolism.

CONTRA-INDICATION :

Contra-indicated during pregnancy and lactation.

SIDE EFFECTS :

No known side effects.

DOSAGE :

2 tablets, 3 times daily over an extended period of time (3-6 months)

1 tablet daily as maintenance dose

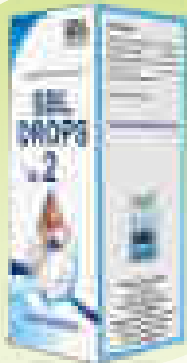
Or, as prescribed by the physician.

PRESENTATION : Bottle of 25 gm and 450 gm

COMPOSITION :

Each tablet contains Phytolacca berry \emptyset 20% W/W





SBL DROPS No. 2

Pain-free month



Many females, especially school going girls and young women, experience pain before &/or during periods (Menstruation) which is known as Dysmenorrhoea. Although some pain during menstruation is normal but excessive pain is not. The pain may be crampy, sharp or aching which may come and go. It is

usually felt in lower abdomen but may radiate to lower back and thighs. Some women may even experience nausea, loose stools, headache and dizziness along with the pain. At times, the pain makes it difficult to perform normal household, job, or school-related activities for a few days every month.

SBL Drops No. 2 relieves the abdominal cramps in women and the associated complaints.

INDICATIONS : Abdominal and pelvic cramps in women associated with nausea, vomiting, low backache, pain in legs and generalised weakness

CONTRA-INDICATION :

No known contra-indication.

DOSAGE :

10-15 drops in 1/4th cup of water 3-4 times a day for 2-3 days before onset of flow

10-15 drops in 1/4th cup of water, 1-2 hourly at onset of pain till the pain lasts

Or as advised by the physician

PRESENTATION :

Bottle of 30 ml

COMPOSITION :

Caulophyllum thalictroides	2x	Magnesium phosphoricum	3x
Cimicifuga racemosa	3x	Viburnum opulus	2x

An In-house Clinically Proven research product of SBL

If you wish to receive a copy of the In-house clinical trial report, please send a self addressed envelope of size 10"x8" with stamp of Rs. 8.00 to Customer Relation Management Cell, SBL House, 2 commercial Complex, Shrestha Vihar, Delhi - 110 092





DYSMIN Tablets

Pain-free month



Painful menstruation termed as Dysmenorrhea is a condition in which a lady has crampy lower abdominal pain, sharp, spasmodic pain that comes and goes. Painful cramps may occur immediately before or during the menstrual period. This pain is usually not related to any specific problem in uterus or other pelvic organs.

SBL's Dysmin acts on the uterus having anti spasmodic and pain relieving properties. SBL's Dysmin Tablets is an In-house clinically proven formulation with well balanced homoeopathic medicines which brings relief from monthly abdominal cramps effectively.

Dysmin can be given for following symptoms:

Abdominal and pelvic cramps in women associated with nausea, vomiting, low backache, pain in legs and generalised weakness.

CONTRA-INDICATION :

No known contra-indication

DOSAGE

2 tablets 4 times daily, 2 days prior to onset of periods followed by 2 tablets every hour during pain. With reduction of pain frequency of dosage may be reduced.

Or, as prescribed by the physician.

PRESENTATION :

Bottle of 25 gm and 450 gm

COMPOSITION :

Cactus grandiflorus	3x	Magnesia phosphoria	3x
Caulophyllum thalictroides	3x	Viburnum opulus	3x
Cimicifuga racemosa	3x		

An In-house Clinically Proven research product of SBL

If you wish to receive a copy of the In-house clinical trial report, please send a self addressed envelope of size 10"x8" with stamp of Rs. 8.00 to Customer Relation Management Cell, SBL House, 2 commercial Complex, Shrestha Vihar, Delhi - 110 092





RINSOUT Mouth Wash

For Mouth Ulcers



Mouth ulcers (medically termed as aphthous stomatitis) are very painful, small shallow ulcers that appear in the mouth affecting cheeks, gums, tongue, lips, and roof or floor of the mouth and often make eating and talking uncomfortable.

Mouth ulcers can be caused by predisposing factors like deficiency iron, folic acid and vitamin B-12. Ulcer may also form by using hard toothbrush, abrasions, wearing ill fitted dentures or sharp tooth. Sodium Lauryl Sulphate (SLS) a detergent in some oral healthcare products or intake of drugs like NSAIDs (pain killers) can produce mouth ulcers.

SBLs Rinsout Mouthwash is an In-house clinically proven composition, blended with best homoeopathic medicines that have anti-septic and anti-inflammatory properties and help in healing the mouth ulcers quickly.

INDICATIONS :

Mouth ulcers with pain, burning, redness and swelling.

CONTRA-INDICATION :

No known contra-indication.

DIRECTION FOR USE :

Put 20-25 drops in 1/4th cup of water; rinse the mouth 2-3 times by holding the liquid in the mouth for about 30-40 seconds. Do this 2-3 times daily.

Or, as prescribed by the physician.

FOR EXTERNAL USE ONLY

Compatible with oral homoeopathic medicines.

PRESENTATION :

bottle of 30 ml with dropper

COMPOSITION :

Calendula officinalis	Q	Echinacea angustifolia	Q
Hydrastis canadensis	Q		

An In-house Clinically Proven research product of SBL

If you wish to receive a copy of the In-house clinical trial report, please send a self addressed envelope of size 10"x8" with stamp of Rs. 8.00 to Customer Relation Management Cell, SBL House, 2 commercial Complex, Shrestha Vihar, Delhi - 110 092





ORTHOMUV Syrup & Massage oil

For Muscle and
joint pain



To be active all joints in our body need to be in good condition, but time and aging bring about changes in the joints which restrict mobility. Problems like Arthritis and Rheumatism are debilitating conditions which generally affect the fingers, hips, knees, neck and other joints, causing pain and stiffness. When joints are affected it can lead to pain, stiffness, swelling, redness and restricted movements.

SBL's ORTHOMUV SYRUP taken orally and ORTHOMUV MASSAGE OIL / SPRAY / ROLL-ON applied externally is the ideal combination to treat joint pains. ORTHOMUV SYRUP is a well-balanced combination containing vital ingredients to treat inflammation, thereby reducing pain and swelling and making movement possible.

ORTHOMUV MASSAGE OIL / SPRAY / ROLL-ON enriched with homoeopathic extract of Gaultheria along with other tinctures penetrate swiftly to the area of pain. After penetration the active ingredient stimulate circulation, relax stiffness and relieve tense painful tissues.

Ideal for : Arthritis, Muscular pain, Backache, Joint pain, Sprains and Cramps.

Ease the swelling pain in joints, stiffness with Orthomuv syrup & Orthomuv massage oil

INDICATIONS : * Joints and muscle pain, * Swelling and stiffness of joints

CONTRA-INDICATION : No Known Contra-indication.

DOUSAGE :

Adults (syrup)	One teaspoonful, 3 times a day
How to apply Orthomuv Massage Oil	Massage the oil gently on the affected area, 2-3 times daily

Or, as prescribed by the physician.

PRESENTATION : Orthomuv Syrup: Bottle of 180 ml, Orthomuv Massage oil & Spray : Bottle of 60 ml Orthomuv Massage oil Roll-on : Bottle of 10 ml.

Also available sugar free Orthomuv Syrup.

COMPOSITION :

SYRUP		MASSAGE OIL / SPRAY/ROLL-ON
Arnica	Q	Ext. Arnica montana
Dulcamara	Q	Ext. Gaultheria procumbens
Gaultheria	3x	Ext. Cantharis
Kali iodatum	3x	Methyl salicylate in sesame oil and L.L.P q.s.
Bryonia	Q	
Rhus tox	6x	
Acidum Benzoicum	3x	

An In-house Clinically Proven research product of SBL

If you wish to receive a copy of the In-house clinical trial report, please send a self addressed envelope of size 10" x 8" with stamp of Rs.8.00 to Customer Relation Management Cell, SBL House, 2 commercial Complex, Shrestha Vihar, Delhi - 110 092



SATIVOL

Nerve tonic



Day to day activities can make you tired and exposure to various pollutants can make you sick. But today's hectic lifestyle needs instant and sustained energy to live a healthier and longer life. To gain the energy back for an active life, use SBL's Sativol.

SBL's Sativol is a dependable and rejuvenating tonic for nerves.

INDICATIONS:

A general tonic for tiredness, fatigue, sleeplessness and decreased appetite.

CONTRA-INDICATION:

No known contra-indication

DOSAGE:

1-2 teaspoonful 3 times a day or as prescribed by the physician

PRESENTATION:

Bottle of 100 ml

COMPOSITION:

Avena sativa	Q	Acidum phosphoricum	2x
Gentiana lutea	Q	Aurum muriaticum	3
Guarana	3x	Helonias dioica	3x





HOMEOCAL Tablets

Osteoporosis



With age our body fails to produce chemicals essential for absorbing calcium, thus leading to weak bones, inflammation of joints and weak bones. This condition of weak bones is known as Osteoporosis. During pre-and post menopausal period, right balance of bone nutrients is not maintained, resulting in weak bones, fractures and loss of curvature of the body. Osteoporosis is quite common in women after menopause.

To control calcium depletion, calcium supplement alone is not enough, as bone health requires balanced absorption of many essential bone nutrients.

HOMEOCAL helps in the absorption of calcium reducing the risk of Osteoporosis. To improve bone health take HOMEOCAL during pre and post menopausal period.

INDICATIONS :

Osteoporosis, calcium depletion, decreased bone density, weak bones & associated pains.

CONTRA-INDICATION :

No known contra-indication.

DOSAGE :

Adults	2 tablets, 3-4 times a day
--------	----------------------------

Or, as prescribed by the physician.

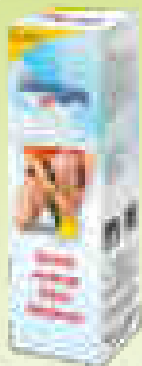
PRESENTATION : Bottle of 25 gm and 450 gm

COMPOSITION :

Calcarea carbonica	3x	Calcarea fluorica	3x
Calcarea phosphorica	3x	Silicea	3x

An In-house Clinically Proven research product of SBL.





ARNICA ACT Spray

Quick acting
pain reliever



SBL's Arnica Act Spray is formulated with well-chosen Homoeopathic medicines to stimulate body's natural ability to quickly relieve pain in conditions of bruising, muscle soreness and stiffness caused by injuries. SBL's Arnica Act Spray is a handy as well as easy-to-use product.

Handy First Aid to be kept in

• First Aid kit • Sports bag, Yoga/Gym kit

WARNING:

For external use only. Do not use on open wounds or mucous membranes. Avoid contact with eyes.

If skin irritation develops; complaints worsen, recur or persist for more than 72 hours, discontinue use and consult a physician.

DIRECTIONS FOR USE:

Adult and Children above 2 yrs of age: Spray on the injured part of the body 2-3 times a day, or use as a compress. Saturate a clean cloth or gauze compress, place on wound and secure with a bandage. Change dressing 2-3 times a day.

PRESENTATION :

Bottle of 50 ml

COMPOSITION :

Arnica montana	3x	Calendula officinalis	3x
Hypericum perforatum	3x	Symphitum officinalis	3x

An In-house Clinically Proven research product of SBL

If you wish to receive a copy of the In-house clinical trial report, please send a self addressed envelope of size 10"x8" with stamp of Rs. 8.00 to Customer Relation Management Cell, SBL House, 2 commercial Complex, Shrestha Vihar, Delhi - 110 092





CLEARSTONE Drops



The body does not make stones. When there is an imbalance of some salts in the body these salts accumulate and form hard substance i.e. 'stones'. Stones are formed in the kidney and can remain in the kidneys or travel to the ureter and the urinary bladder and cause a great deal of discomfort and pain.

CLEARSTONE is a product with a distinct composition of most effective homoeopathic medicines that is specifically designed to provide relief from renal colic (pain).

INDICATIONS :

Renal colic. Pain is felt in flanks extending to groins which may be accompanied with painful urination and blood in urine.

CONTRA-INDICATION :

No known contra-indication.

DOSAGE :

Adults	10-15 drops in ¼th cup of water, 3 times a day
Children	5-10 drops in ¼th cup of water, 3 times a day

Or, as prescribed by the physician.

PRESENTATION :

Bottles of 30 ml

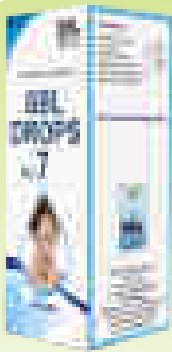
COMPOSITION :

Berberis vulgaris	Q	Sarsaparilla	Q
Ocimum canum	Q	Solidago vigaurea	Q
Pareira brava	Q	Senecio aureus	Q

An In-house Clinically Proven research product of SBL

If you wish to receive a copy of the In-house clinical trial report, please send a self addressed envelope of size 10"x8" with stamp of Rs. 8.00 to Customer Relation Management Cell, SBL House, 2 commercial Complex, Shrestha Vihar, Delhi - 110 092





SBL DROPS No. 7

Sinusitis



Sinusitis refers to inflammation of membrane lining the para-nasal sinuses, where sinuses are air-filled spaces present in skull around the nose. Normally air-filled sinuses get blocked and filled with fluid after getting infected with microbes like bacterias and viruses.

RISK FACTORS

• Irritants such as air pollution, smoke and chemicals • Allergies like allergic rhinitis, asthma • Recurrent ear infections • Narrow nasal passages

SBL DROPS No. 7 alleviates the signs and symptoms of sinusitis like

• Nasal stuffiness &/or discharge • Postnasal discharge • Facial pain, headache
• Thick yellow, green or white nasal discharge

CONTRA-INDICATION :

No known contra-indication

DOSAGE:

10-15 drops in 1/4th cup of water 3-4 times a day or as prescribed by the physician.

PRESENTATION:

Bottle of 30 ml

COMPOSITION:

Hydrastis canadensis	3x	pulsatilla nigricans	3x
Lemna minor	3x	Sanguinaria canadensis	3x

An In-house Clinically Proven research product of SBL

If you wish to receive a copy of the In-house clinical trial report, please send a self addressed envelope of size 10"x8" with stamp of Rs. 8.00 to Customer Relation Management Cell, SBL House, 2 commercial Complex, Shrestha Vihar, Delhi - 110 092





SLEEPTITE Tablets

Sleeplessness



Insomnia (sleeplessness) is a sleep disorder characterised by an inability to sleep and/or inability to remain asleep for a reasonable period. Insomnia is the perception or complaint of inadequate or poor-quality sleep, which may be characterised by difficulty falling asleep, waking up frequently during the night with difficulty returning to sleep, waking up too early in the morning or unrefreshing sleep.

It may be due to old age, anxiety, stress or shift duties and may lead to irritability, drowsiness during day, aching muscles, headache, prostration, weakness, periorbital puffiness (swelling around eyes), poor concentration, confusion, increased blood pressure & risk of depression.

SBL's SLEEPTITE Tablets relaxes the mind and facilitates sound sleep.

INDICATIONS:

• Disturbed sleep • Sleeplessness • Difficulty in falling asleep due to anxiety & restlessness

CONTRA-INDICATION:

No known contra-indication.

DOSAGE:

Adults: 2 Tablets 3-4 times daily or as advised by the physician

PRESENTATION:

Bottle of 25 gm and 450gm

COMPOSITION:

Ferrum phosphorica	3x	Kali phosphorica	3x
Magnesium phosphorica	3x		

An In-house Clinically Proven research product of SBL

If you wish to receive a copy of the In-house clinical trial report, please send a self addressed envelope of size 10"x8" with stamp of Rs. 8.00 to Customer Relation Management Cell, SBL House, 2 commercial Complex, Shrestha Vihar, Delhi - 110 092





TONSILAT Tablets

Tonsillitis



Tonsils act as filters by trapping germs that could otherwise enter the airways and cause infections. Thus, Tonsils are the first line of defense, protecting body from respiratory infections.

Tonsils also produce antibodies that fight infections. Thus, tonsils play a significant role in maintaining the body's immune system.

But sometimes, tonsils themselves gets infected resulting in inflammation (swelling) called Tonsillitis. It is a painful condition and may be accompanied by very high fever. Infection of tonsils can also result in ear ache, headache, hoarseness of voice, and swallowing difficulty.

In the case of children, it can also result in nausea and vomiting.

SBL's Tonsilat is an In-house clinically proven product, composed of well-balanced homoeopathic medicines which prevent symptoms of tonsillitis and treat the infection of tonsils.

INDICATIONS :

* Tonsillitis * Sore throat * Pharyngitis

CONTRA-INDICATION :

No known contra-indication.

DOSAGE :

Adults	2 tablets every 3 hours
Children	1 tablet every 3 hours

Or, as prescribed by the physician.

PRESENTATION :

Bottle of 25 gm and 450 gm

COMPOSITION :

Baryta carbonicum	3x	Kali muriaticum	1x
Belladonna	3x	Mercurius bin-iodatus	3x
Ferrum phosphoricum	3x		

An In-house Clinically Proven research product of SBL

If you wish to receive a copy of the In-house clinical trial report, please send a self addressed envelope of size 10"x8" with stamp of Rs. 8.00 to Customer Relation Management Cell, SBL House, 2 commercial Complex, Shrestha Vihar, Delhi - 110 092





AT-TABS

Tablets

Trauma and Injuries



Injury, accidents, surgery, visit to the dentists can create traumatic conditions. SBL's AT-TABS is formulated keeping in mind all kinds of injuries from a small fall to fractures. AT-TABS controls the bleeding, pain and inflammation and helps the body to heal faster.

Use AT-TABS as first-aid in all cases of accidents, surgical conditions, dental extraction.

* For prevention of shock in pre and post surgical care, * For rapid recovery from sprains and strains, * For muscular and joint pains, backache especially arising out of faulty postures, * Also helps in the repair and union of fractured bones, * A useful remedy for lumbago, gout and rheumatic joint pains.

CONTRA-INDICATION :

No known contra-indication.

DOSAGE :

Adults	2 tablets, every 4 hours of 4 times a day
Children	1 tablet, every 4 hours or 4 times a day

Or, as prescribed by the physician.

PRESENTATION :

Bottle of 25 gm and 450 gm

COMPOSITION :

Arnica montana	3x	Hypericum perforatum	3x
Ledum palustre	3x	Rhus toxicodendron	6x
Ruta graveolens	3x	Symphytum officinalis	2x
Bellis perennis	3x		

An In-house Clinically Proven research product of SBL

If you wish to receive a copy of the In-house clinical trial report, please send a self addressed envelope of size 10"x8" with stamp of Rs. 8.00 to Customer Relation Management Cell, SBL House, 2 commercial Complex, Shrestha Vihar, Delhi - 110 092





PROSTONUM Drops



The prostate is gland of the male reproductive system and is situated under the urinary bladder. By the age of 70, 40% of men have enlarged prostate which leads to various urinary problems. This condition is known as Enlarged Prostate or BPH (Benign Prostatic Hypertrophy)

SBL's PROSTONUM Drops is an ideal solution to overcome problems associated with prostate.

INDICATIONS :

* Urgency (leakage or dribbling), * Difficulty in starting urination (hesitancy), * Frequent urination, * Frequent awakening at night for urination, * Sensation as if bladder is not fully emptied, * Burning sensation while urinating.

CONTRA-INDICATION :

No known contra-indication.

DOSAGE :

Adults	10-15 drops in ¼th cup of water, 3-4 times daily
--------	--

Or, as prescribed by the physician.

PRESENTATION :

Bottle of 30 ml

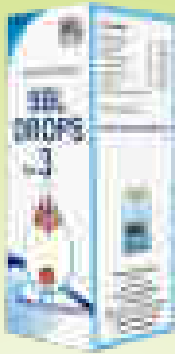
COMPOSITION :

Sabal serrulata	2x	Chimaphila umbellate	3x
Clematis erecta	3x	Conium maculatum	3x
Pareira brava	3x	Pulsatilla nigricans	3x

An In-house Clinically Proven research product of SBL

If you wish to receive a copy of the In-house clinical trial report, please send a self addressed envelope of size 10"x8" with stamp of Rs. 8.00 to Customer Relation Management Cell, SBL House, 2 commercial Complex, Shrestha Vihar, Delhi - 110 092





SBL DROPS No. 3

UTI



Urinary tract is the body's drainage system for removing wastes out of the body. Infection in the urinary tract is known as Urinary Tract Infection (UTI). It occurs more commonly in females than males. Chances of incurring UTI increase during pregnancy, diabetes, old age or prolonged catheterization.

Signs and symptoms of UTI : -Persistent urge to urinate -Burning sensation while urination -Passing frequent and small amounts of urine -Pain in lower abdomen -Cloudy, red-coloured urine -Fever with chills, nausea & vomiting.

SBL Drops No. 3 is an effective formulation for the treatment and management of UTI. It is recommended to take adequate fluid and maintain proper hygiene.

INDICATIONS :

* Burning sensatin while urination, * Pain in lower abdomen, * Frequent & unsatisfactory urination, * Blood in urine.

CONTRA-INDICATION :

No known contra-indication.

DOSAGE : 15-20 Drops in 1/4th cup of water 4 times a day.

Reduce to 15 drops 3 times a day when better or as prescribed by the physician

PRESENTATION : Bottle of 30 ml

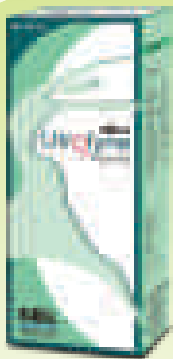
COMPOSITION :

Berberis vulgaris	Q	Pareira brava	Q
Sarsaparilla officinalis	Q	Senecio aureus	Q
Ocimum cannum	Q	Cantharis vesicatoria	3x

An In-house Clinically Proven research product of SBL

If you wish to receive a copy of the In-house clinical trial report, please send a self addressed envelope of size 10"x8" with stamp of Rs. 8.00 to Customer Relation Management Cell, SBL House, 2 commercial Complex, Shrestha Vihar, Delhi - 110 092





UTROFYNE Syrup

Uterine tonic



Menstrual irregularities are common abnormalities of a woman's menstrual cycle. Menstrual irregularities include conditions in which menstruation is irregular, heavy, painful, or does not occur at all.

Menstrual irregularities can include conditions where there is excessive blood flow or menses lasts for longer duration or can include both, or when uterine bleeding, occurring at completely irregular intervals, particularly between the expected menstrual periods. Abnormal uterine bleeding can occur due to hormonal imbalance or due to underlying causes of stress, polyps, fibroids etc.

SBL's Utrofyne Syrup is an In-house clinically proven formulation, composed of well balanced combination of homoeopathic medicines which regularizes the cycle and brings back the normal rhythm. Utrofyne is useful for following :

INDICATIONS :

Uterine tonic. Pain in back and tired feeling

CONTRA-INDICATION :

No known contra-indication

DOSAGE :

One teaspoonful, 3 times a day

Or, as prescribed by the physician.

PRESENTATION :

Bottle of 115 ml, 180 ml and 500 ml

COMPOSITION :

Abroma augusta	Q	Jonosia asoka	Q
Calcarea phosphorica	3x	Magnesia phosphorica	3x
China officinalis	Q	Pulsatilla nigricans	Q
Caulophyllum	Q	Viburnum opulus	Q





THUJA ROLL-ON

Targets the warts



Warts are small, usually painless growths on the skin caused by the human papilloma virus (HPV). HPV stimulates quick growth of cells on the skin's outer layer. Warts may affect the appearance and can be embarrassing. Most of the time they are harmless but can spread from one part of body to another. Warts can spread from person to person, but this is uncommon.

SBL's Thuja Roll-on is a handy, easy-to-use, direct application and helps in painless alleviation of warts without any adverse effects.

DIRECTIONS FOR USE:

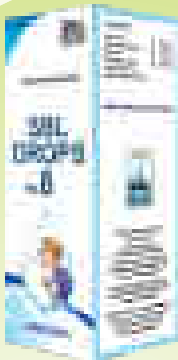
Roll it on the wart 2-3 times a day

Can be used effectively with oral homoeopathic medicines

COMPOSITION:

Thuja occidentalis	Q
--------------------	---





SBL DROPS No. 8 Allergic Rhinitis



Allergic rhinitis is a common manifestation of allergic diseases affecting approximately 10% -25% of the world population. Allergic rhinitis is an inflammation of the nasal passages caused by an allergen. The predisposing factors might be positive family history, exposure to chemicals, perfumes, cold temperature, humidity, wind, air pollution, fumes and smoke.

Signs & symptoms

* Watery nasal discharge, * Paroxysmal sneezing, * Nasal obstruction, * Itching in nose, palate & pharynx, * Watering of eyes, * Loss of sense of smell, * Post nasal drip

SBL DROPS No. 8 is an effective formulation for relieving the symptoms associated with allergic rhinitis.

INDICATIONS : Nasal discharge, excessive sneezing, itching/irritation in nose, throat, watering of eyes, nasal obstruction and head ache.

CONTRA-INDICATIONS :

No known contraindications

DOSAGE :

Adult : 10 drops, Children : 5 Drops

in 1/4th cup of water 4 times a day or as prescribed by the physician

PRESENTATION :

Bottle of 30 ml

COMPSOTION

Allium cepa	3x	Sabadilla	3x
Euphrasia officinalis	3x	Solidago virgaurea	3x

An In-house Clinically Proven research product of SBL

If you wish to receive a copy of the In-house clinical trial report, please send a self addressed envelope of size 10"x8" with stamp of Rs. 8.00 to Customer Relation Management Cell, SBL House, 2 commercial Complex, Shrestha Vihar, Delhi - 110 092





SBL DROPS No. 9 Cough



Cough is a defensive reflex of the body that helps keep the airways clear of irritating or obstructing substances so that breathing and the intake of oxygen is effective. In addition to being an airway defense mechanism, coughing is a very common symptom observed in many diseases. Cough may be dry, productive (accompanied with expectoration) or rattling (expectoration is difficult to be hawked out)

SBL Drops No. 9 is an In-house clinically proven homoeopathic formulation which relieves cough & the associated signs & symptoms effectively without producing any adverse effects

INDICATIONS

Dry, productive and rattling cough. Cough associated with irritation and dryness in throat ; pain in throat and chest ; and post nasal discharge.

CONTRA-INDICATIONS :

No known contra-indications

DOSAGE :

Adult: 10 drops, Children : 5 Drops
in 1/4th cup of water 4 times a day or as prescribed by the physician

PRESENTATION

Bottle of 30 ml

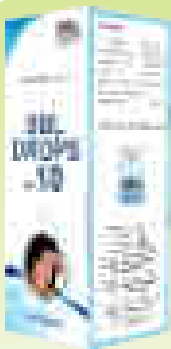
COMPOSITION

Blatta orientalis	3x	Bryonia alba	3x
Ipecacuanha	3x	Zingiber officinalis	2x

An In-house Clinically Proven research product of SBL

If you wish to receive a copy of the In-house clinical trial report, please send a self addressed envelope of size 10"x8" with stamp of Rs. 8.00 to Customer Relation Management Cell, SBL House, 2 commercial Complex, Shrestha Vihar, Delhi - 110 092





SBL DROPS No. 10 Hot Flashes



Women encounter a change of life usually during the age of 45 and 55, although it may occur as early as in 30s or 40s and as late as 60s. All women undergo this physiological transition in their lives. It is not a disease but an inevitable normal ageing process which is marked by the end of reproductive phase.

The symptoms a patient encounters due to this physiological change in the body are as follows.

* Hot flashes, palpitation, * Night sweats, * Irritability, anxiety, mood swings, depression, insomnia, headache, * Dry vagina, * Difficulty concentrating, mental confusion, * Stress incontinence, urge incontinence, * Osteoporotic symptoms.

SBL Drops No. 10 is a balanced combination of well-selected homoeopathic medicines which helps relieve the signs & symptoms associated with change of life in women.

INDICATIONS :

For women having hot flashes with anxiety, palpitation and perspiration during change of life.

CONTRA-INDICATIONS :

No known contra-indications

DOSAGE

10 drops in 1/4th cup of water 4 times a day or as prescribed by the physician

PRESENTATION

Bottle of 30 ml

COMPOSITION

Arnica montana	3x	Crataegus oxyacantha	Q
Cimicifuga racemosa	3x	Janosia ashoka	3x
Sanguinaria canadensis	3x		

An In-house Clinically Proven research product of SBL

If you wish to receive a copy of the In-house clinical trial report, please send a self addressed envelope of size 10"x8" with stamp of Rs. 8.00 to Customer Relation Management Cell, SBL House, 2 commercial Complex, Shrestha Vihar, Delhi - 110 092





WIPECLEAR ACNE LOTION

External application



Acne is a very common skin ailment. Most people with acne are aged between 12 and 25 but some older and younger people are affected. Boys are more commonly affected than girls. The severity can range from mild to severe. It starts when greasy secretions from the skin's sebaceous glands (oil glands), dead skin or bacteria plug the tiny openings for hair follicles. Most of them form on the face, neck, back, chest, and shoulders.

SBL's Wipeclear acne Lotion is an In-house clinically proven combination which reduces acne, pustules and scar marks

INDICATIONS

Acne vulgaris. Papules, pustules and comedones on face, arms & back

CONTRA-INDICATIONS

No known contra-indications

DIRECTIONS FOR USE

Apply twice a day using a clean cotton swab after washing the affected area

PRESENTATION

Bottle of 30 ml

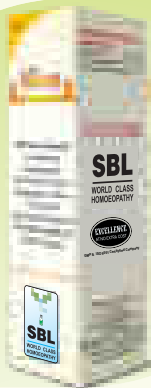
COMPOSITION

Berberisaquifolium	Q	Echinacea angustifolia	Q
Bellisperennis	Q	Ledumpalustre	Q

An In-house Clinically Proven research product of SBL

If you wish to receive a copy of the In-house clinical trial report, please send a self addressed envelope of size 10"x8" with stamp of Rs. 8.00 to Customer Relation Management Cell, SBL House, 2 commercial Complex, Shrestha Vihar, Delhi - 110 092





BURN-REL SPRAY

Minor Burns & Scalds



Burns are commonly caused by fire (gas stove, candles, crackers) and scalds from hot liquids, steam, flammable liquids and gases. Other causes can be chemicals, electricity, sunlight or radiation. Most burns are minor injuries that occur at home or work. It is common to get a minor burn from hot water, an iron, or touching a hot stove.

Burns can cause swelling, blistering, scarring and, in serious cases, shock and even death. They also can lead to infections because they damage the skin's protective barrier.

SBL launches the first of its kind First Aid homoeopathic spray for minor burns & scalds
SBL's Burn-Rel spray

USES:

SBL's Burn-Rel Spray is a handy as well as easy-to-use product to relieve stinging pain, redness, rawness and inflammation associated with burns & Scalds.

Ideal to be kept in first aid kit at

Home / Kitchen / Workplace / Factories / Camps / Vehicle.

ADVANTAGE

It can be sprayed on the affected area without touching

DIRECTIONS TO USE

Adult and children above 2 years. of age :

Spray directly or after washing the affected area under low pressure running water. Hold the bottle 4-6 inches away from the skin. Point the nozzle towards the affected (**area away from the eyes**) and spray a thin film of medicine 3-4 times a day until the symptoms subside

WARNING : For external use only. Avoid contact with eyes, If irritation increases or persists for more than 72 hours, discontinue use and consult a physician. Do not touch the nozzle to any surface since this may contaminate the solution.

PRESENTATION : Bottle of 50 ml

COMPOSITION

Cantharis Ext.





SBL's Ache-Nil Drops



Viral infections are characterised by fever, body ache, skin rashes, muscle & joint pains, headache and sore throat. It may affect any age group, and are seen world-wide. India faces the epidemic every year with thousands of people getting affected by and large, especially **dengue and chikungunya**.

Antibiotics do not work for viral infections. Dengue and Chikungunya are mosquito-borne viral diseases and spread through the bite of a

mosquito, principally *Aedes aegypti*. The mosquitoes breed usually in unhygienic places, unclean vessels and containers and water-logged areas.

Ache-Nil Drops is a product of SBL's In-House Research & Development and is a combination of well-known Homoeopathic medicines used for treating viral infections and associated complaints. SBL's Ache-Nil Drops not only treats the symptoms but can also be taken to strengthen the immune system so as to keep oneself protected during the spread of viral infections.

INDICATIONS :

Viral infections accompanied by headache, fever, pain in joints, body ache, fatigue, cough, cold and rashes

CONTRA-INDICATIONS : No known contraindications

DOSAGE :

Adult: 15 drops

Children: 10 drops

in 1/4th cup of water 2-4 times a day or as prescribed by the physician

PRESENTATION : Bottle of 30ml

COMPOSITION :

Belladonna	3x	Bryonia alba	3x
Rhustoxicodendron	6x	Ipecacuanha	3x
Eupatorium perfoliatum	3x	Tinospora cordifolia	Q

An In-house Clinically Proven research product of SBL

If you wish to receive a copy of the In-house clinical trial report, please send a self addressed envelope of size 10"x8" with stamp of Rs. 8.00 to Customer Relation Management Cell, SBL House, 2 commercial Complex, Shrestha Vihar, Delhi - 110 092



Coming Soon



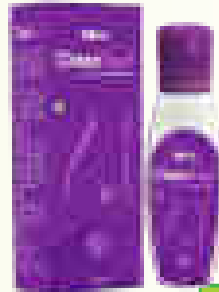
^
BABCHI OIL



^
DAMIAGRA FORTE



^
FIVE PHOS A+

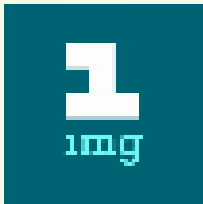


^
CLEANFEEL





**Now you can also buy
SBL products online @**



www.1mg.com

 **HEALTHMUG**





First Homeopathic Company in India with
ISO 9001 : 2000 Certification



SBL PVT. LTD. SBL House, 2, Commercial Complex, Shrestha Vihar, Delhi - 110 092, INDIA
Tel: 91-11-2216 1934, 2216 1935, 2216 5145, 2216 2239 Fax: 91-11-2216 2353, 2214 9221
Website: www.sblglobal.com, Email: care@sblglobal.in

SAFE AND EFFECTIVE!

Nature's Healing powers brought to you in a convenient way!



AFFORDABLE • SAFE • RELIABLE • CLINICALLY PROVEN

At SBL, We understand how precious good health is, not only of an individual but of the entire family.

The Product is only as good as the quality of the active medicinal ingredient in the product.

The active medicinal ingredient in our homoeopathic formulation is uniform & pristine. We ensure that every drop of medicine is the epitome of purity. SBL possesses the most advanced pharmaceutical manufacturing techniques to deliver precision & accuracy. Microbiological monitoring ensures that all formulations are checked for adverse bacterial development.

It is our conscious effort to manufacture quality homoeopathic medicines of world class standard for various ailments at affordable price.

It is this effort that makes our homoeopathic remedies for various ailments both reliable and effective.

The quality of products is assured by our quality control labs. Also the therapeutic efficacy is backed by our R&D Department which is recognized and certified by Ministry of Science & Technology, Govt. of India.

SBL, by virtue of its advanced technology and dedication to supreme quality is at the forefront of making reliable medicines. SBL continues to abide by the corporate motto: Excellence at no extra cost